

香港寬頻商業寬頻服務
HKBN
Business Broadband Service

網路連接配置及電子郵件設定指南
Internet Connection & Email
Configuration Guide

目錄 Table of Content

- (I) 簡介 Introduction
- (II) 電腦系統基本要求 System Requirement
- (III) 如何安裝香港寬頻商業寬頻服務
How to Use HKBN Business Broadband Service
 - 視窗 XP PPPoE 接駁配置指南
Installation Guide for Windows XP Using PPPoE
 - 視窗 XP 動態 IP 位址配置指南
Installation Guide for Windows XP Using DHCP IP Address
 - 視窗 XP 固定 IP 位址配置指南
Installation Guide for Windows XP Using Static IP Address
- (IV) 如何設定 Internet Explorer
Internet Explorer Set Up via HKBN Business Broadband
- (V) HKBN Broadband Mail POP3 用戶設定 Outlook 手冊 HKBN
Broadband Mail Outlook Setup for POP3 User Guide
- (VI) 如何透過 HKBN Broadband Mail 網上電郵服務接收電子郵件
How to Check E-mail via HKBN Broadband Mail Web-based E-mail Account

(I) 簡介 Introduction

香港寬頻為配備自建設施的寬頻及多媒體服務供應商，致力為客戶提供完善先進的寬頻互聯網方案，以及優質的客戶服務。透過最新的光纖互連大廈互聯網接駁技術，香港寬頻商業寬頻服務為您提供可靠及相同雙向頻寬的互聯網服務。

HKBN's Business Broadband Service offers customers high-speed access to the Internet. Our Fiber-To-The-Building architecture caters for high speed and high bandwidth multimedia applications with two-way symmetric bandwidth for upload and download.

這本安裝指南能讓您簡易地使用我們為您提供的優質互聯網服務。

Simply follow the instructions with this user guide and enjoy the many benefits of our Internet access service.

(II) 電腦系統基本要求 System Requirement

香港寬頻商業寬頻服務基本安裝配備：

Basic requirements for installation of HKBN Business Broadband:

- Pentium 電腦配備 233 MHz (或以上)處理器
Pentium 233MHz Processor (or above)
- 128MB RAM 記憶體
128MB RAM memory
- 微軟視窗 XP SP3
Microsoft Windows XP SP3
- 已安裝之以太網絡接駁卡
Pre-installed Ethernet Card

(III) 如何安裝香港寬頻商業寬頻服務 **How to Use HKBN Business Broadband Service**

於安裝香港寬頻商業寬頻服務前，請首先確定已安裝網路咭於電腦內，網路咭安裝程序請參照網路咭用戶手冊。

Before installing HKBN Business Broadband Service, please ensure the network card has been properly installed in your PC according to the user manual of the network card.

視窗 XP PPPoE 接駁配置指南 Installation Guide for Windows XP Using PPPoE

於完成網路咭安裝後參照下列步驟：

Follow the steps below when the LAN card has completed installation:

1. 設定網路

Network Setting

- 1.1. 按「開始」鍵並選擇「控制台」
Click “Start” and select “Control Panel”
- 1.2. 選擇並按兩次「網路連線」
Select and double click “Network Connections”
- 1.3. 在左方目錄中按「建立一個新連線」
Click “Create a new connection” in the left hand side menu



2. 新增網路連線精靈

New Connection Wizard

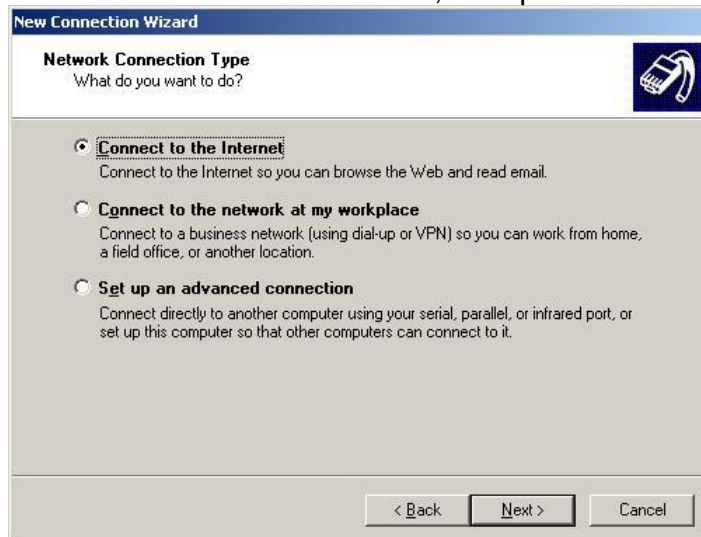
2.1. 按「下一步」

Press "Next"



2.2. 選擇「連線到網際網路」，然後按「下一步」

Select "Connect to the Internet", then press "Next"




- 2.3. 選擇「手動設定我的連線」，然後按「下一步」
Select “Set up my connection manually”, then press “Next”



- 2.4. 選擇「使用需要使用者名稱和密碼的寬頻連線來連線」，然後按「下一步」
Select “Connect using a broadband connection that requires a user name and password”, then press “Next”



- 2.5. 輸入 ISP 名稱為「NWTBB」，然後按「下一步」
Input a name “NWTBB”, then press “Next”



The screenshot shows a Windows-style dialog box titled "New Connection Wizard". The main heading is "Connection Name". Below it, the text reads: "What is the name of the service that provides your Internet connection?". There is a small icon of a computer mouse in the top right corner. The main area contains the instruction: "Type the name of your ISP in the following box." followed by "ISP Name" and a text input field containing "NWTBB". Below the input field, it says: "The name you type here will be the name of the connection you are creating." At the bottom, there are three buttons: "< Back", "Next >", and "Cancel".

- 2.6. 請輸入你的「使用者名稱」 (User_ID@nwtbb)，並輸入你的「密碼」，
然後按「下一步」
Input your “User name” (User_ID@nwtbb), and “Password”, then press
“Next”



The screenshot shows the same "New Connection Wizard" dialog box, but at the "Internet Account Information" step. The text reads: "You will need an account name and password to sign in to your Internet account." with a mouse icon in the top right. The main instruction is: "Type an ISP account name and password, then write down this information and store it in a safe place. (If you have forgotten an existing account name or password, contact your ISP.)". There are three input fields: "User name:" with "User_ID@nwtbb", "Password:" with seven dots, and "Confirm password:" with seven dots. At the bottom, there is a checkbox labeled "Make this the default Internet connection" which is currently unchecked. The bottom buttons are "< Back", "Next >", and "Cancel".

2.7. 按「完成」
Click “Finish”



3. 按「連線」
Click “Connect”



如要設定自動/手動連線,請參閱“(IV)如何設定 Internet Explorer” For setting of Auto/manual connection, please refer to “(IV)Internet Explorer Set Up via HKBN Business Broadband”

於完成網路咭安裝後參照下列步驟：

Follow the steps below when the LAN card has completed installation:

1. 設定網路

Network Setting 1.1. 按「開始」鍵

並選擇「控制台」

Click “Start” and select “Control Panel”

1.2. 選擇並按兩次「網路連線」

Select and double click “Network Connections”

1.3. 在「區域網路或高速網際網路」目錄下，按兩次「區域連線」

In the section “LAN or High-Speed Internet”, double click “Local Area Connection”.



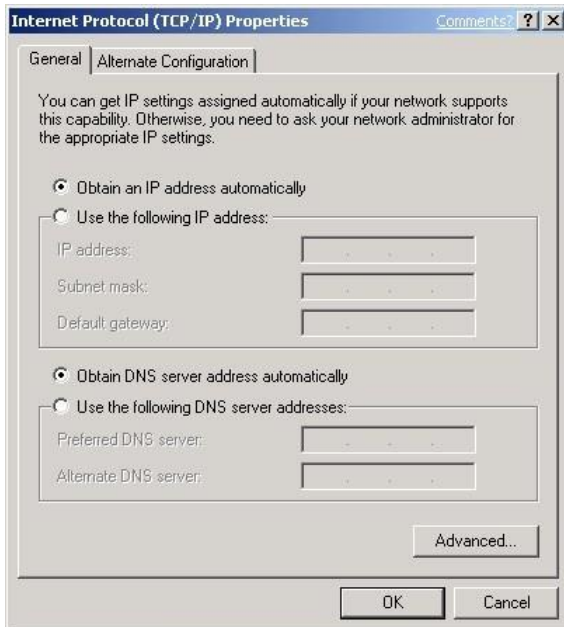
2.



- 2.1. 按「內容」
Click "Properties"
- 2.2. 選擇「一般」鍵
Select "General" tab
- 2.3. 點選「Internet Protocol (TCP/IP)」，然後按「內容」鍵
Select "Internet Protocol (TCP/IP)" and click "Properties"

*附圖所顯示的TCP/IP 只供參考
The TCP/IP figured in diagram is for reference only*

3.



- 3.1. 選擇「自動取得 IP 位址」
Select "Obtain an IP address automatically"
- 3.2. 選擇「自動取得 DNS 伺服器位址」
Select "Obtain DNS server address automatically"
- 3.3. 再按「確定」
Click "OK"

於完成網路咭安裝後參照下列步驟：

Follow the steps below when the LAN card has completed installation:

1. 設定網路

Network Setting 1.1. 按「開始」鍵
並選擇「控制台」

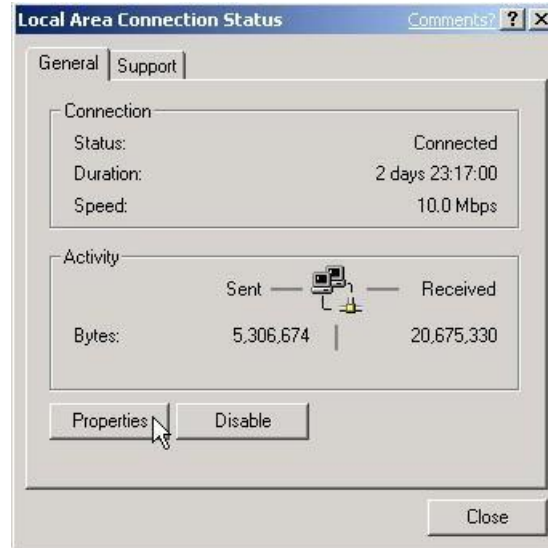
Click “Start” and select “Control Panel”

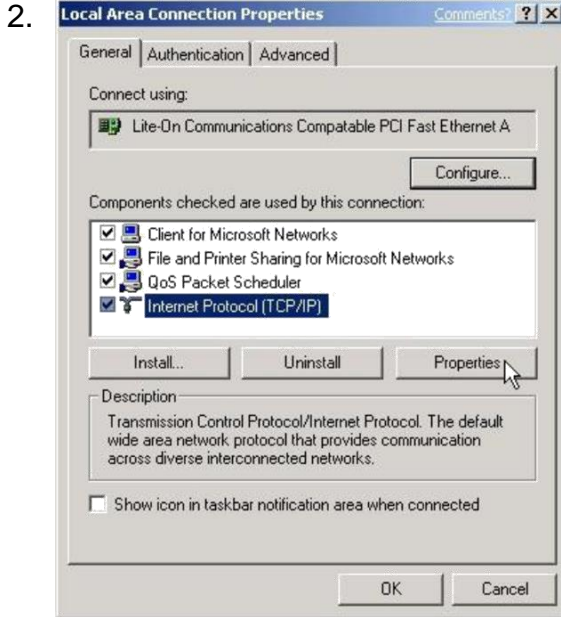
1.2. 選擇並按兩次「網路連線」

Select and double click “Network Connections”

1.3. 在「區域網路或高速網際網路」目錄下，按兩次「區域連線」

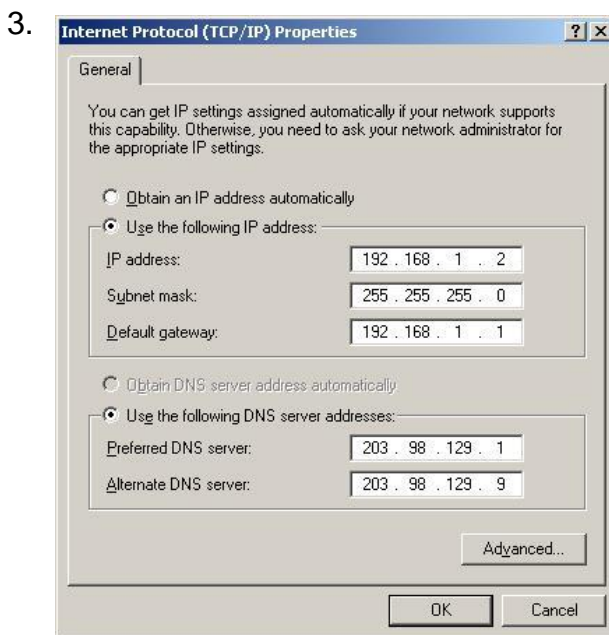
In the section “LAN or High-Speed Internet”, double click “Local Area Connection”.





- 2.1. 按「內容」
Click "Properties"
- 2.2. 選擇「一般」鍵
Select "General" tab
- 2.3. 點選「Internet Protocol (TCP/IP)」，然後按「內容」鍵
Select "Internet Protocol (TCP/IP)" and click "Properties"

*附圖所顯示的TCP/IP 只供參考
The TCP/IP figured in diagram is for reference only*



- 3.1. 選擇「使用下列的 IP 位址」
Select "Use the following IP address"
- 3.2. 輸入香港寬頻提供的 IP 位址及子網路遮罩
Type in your ASSIGNED "IP address" and "Subnet Mask" provided by HKBN.
- 3.3. 選擇「使用下列的 DNS 伺服器位址」
Select "Use the following DNS server addresses"
- 3.4. 輸入香港寬頻提供的 DNS 伺服器位址，並按「確定」
Type in your ASSIGNED "DNS server" addresses provided by HKBN, and click "OK".

(IV) 如何設定 Internet Explorer Internet Explorer Set Up via HKBN Business Broadband

1. 設定首頁

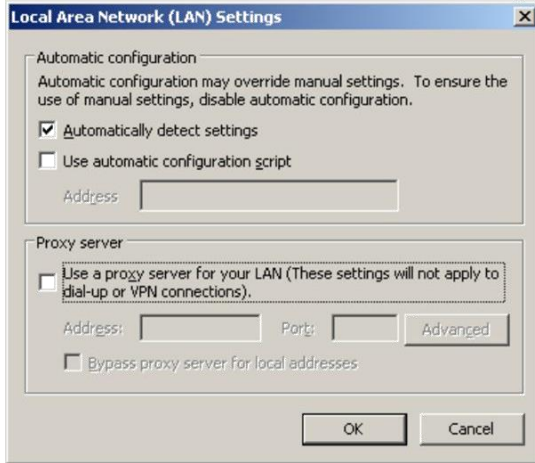
Configure home page

- 1.1. 按「開始」及選擇「控制台」
Click "Start" and select " Control Panel "
- 1.2. 按兩次「Internet 選項」
Double click "Internet Options"
- 1.3. 選擇「一般」鍵
Select "General" tab
- 1.4. 在網址一欄輸入 http://hkbnes.net
Enter http:// hkbnes.net in the "address" field of "Homepage" Section
- 1.5. 按「確定」
Click "OK" to confirm

2.



- 2.1. 選擇「連線」
Select "Connection" tab
- 2.2. 如要每次上網時自動連線,可選擇「永遠使用預設的連線」
Select "Always dial my default connection" if you want for automatically connection.
- 2.3. 如要每次上網時手動連線,可選擇「網絡連線不存在時撥號」
Select "Dial whenever a network connection is not present" if you want for manually connection
- 2.4. 按「區域網路設定」
Click "LAN Settings"



2.5. 在「區域網路設定」內選擇「自動偵測設定」

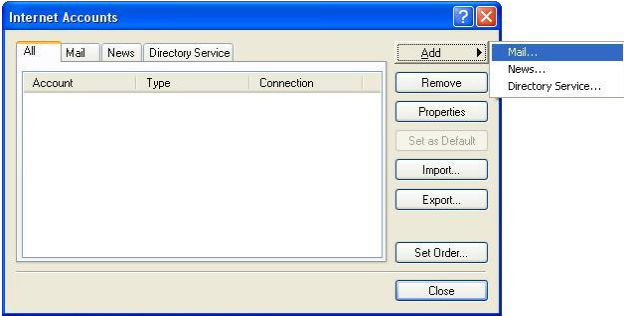
Select "Automatically detect settings" in "Local Area Network (LAN) Settings"

2.6. 按「確定」
Click "OK"

3. 然後重新啟動 Internet Explorer
Restart the Internet Explorer


(V) HKBN Broadband Mail POP3 用戶設定 Outlook 手冊 HKBN Broadband Mail Outlook Setup for POP3 User

1. 開啟 Microsoft Outlook / Outlook Express
Start Microsoft Outlook / Outlook Express

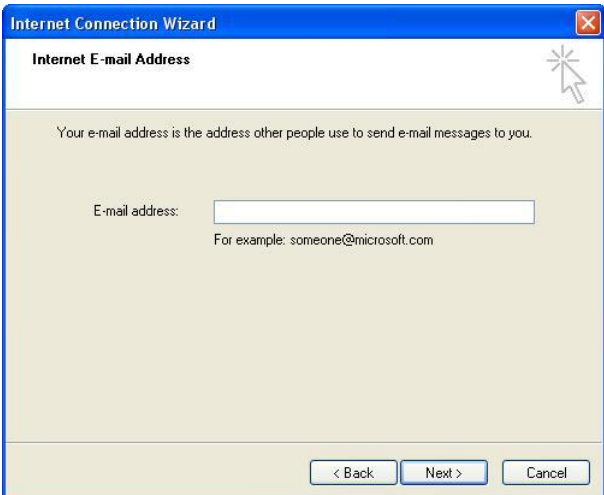
2. 

2.1. 在工具列打開「工具」並選擇「帳號」
Click on pull-down menu "Tools", then select "Accounts".

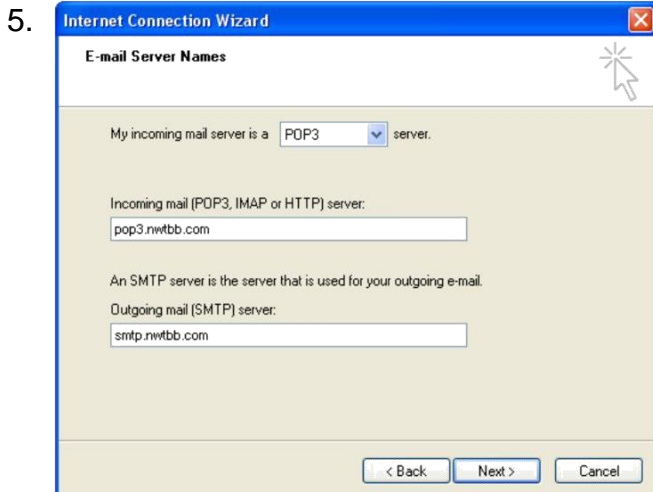
2.2. 按「新增」並選擇「郵件」
Click "Add" button and select "Mail".

3. 

3.1. 在「顯示名稱」一欄輸入您的名稱，此名稱將會在送出的郵件中寄件者一欄出現。然後按「下一步」
Enter your "Display Name" and press "Next". This name will be displayed as "Sender" in all outgoing mails.

4. 

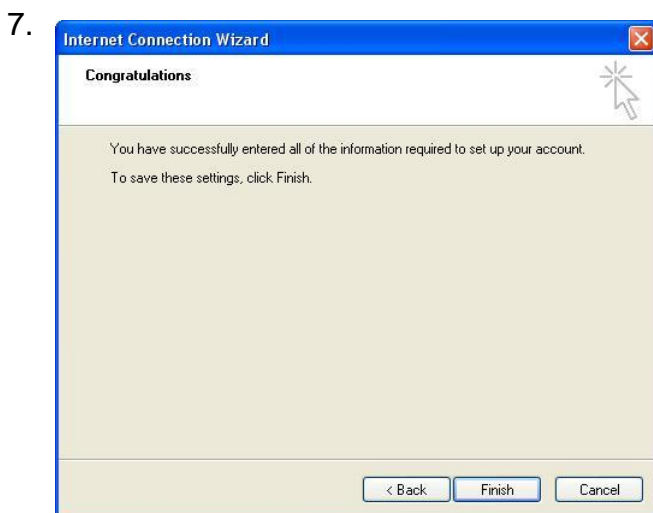
4.1. 在「電子郵件地址」填上你的個人電子郵件地址 (Email Address)，然後按「下一步」
Enter your email address and press "Next".



- 5.1. 在「我的內送郵件伺服器是」選擇 "POP3" 伺服器。Choose "POP3" in "My incoming mail server".
- 5.2. 在內收郵件伺服器一欄填上 "pop3.nwtbb.com"。在外送郵件伺服器一欄填上 "smtp.nwtbb.com"。之後按「下一步」。
Enter "pop3.nwtbb.com" in "Incoming mail server" and enter "smtp.nwtbb.com" in "Outgoing mail server". Then press "Next".

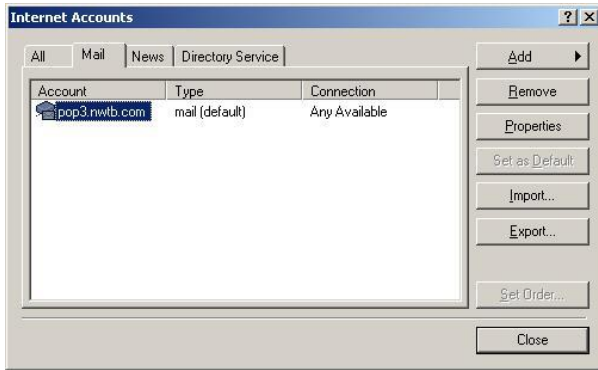


- 6.1. 「帳號」已顯示你的使用者名稱，如沒有，請輸入你的「使用者名稱」並輸入你的「密碼」之後按「下一步」。
Your user name should have been displayed in "Account Name". If not, enter your "User ID" and your password. Then press "Next".



- 7.1. 按「完成」離開。
Press "Finish"

8.



8.1. 開啟 Microsoft Outlook / Outlook Express

8.2. 在工具列打開「工具」並選擇「帳號」

Click on pull-down menu "Tools", then select "Accounts".

8.3. 選擇「你的帳戶」並按「內容」

Select "Your account" and click "Properties".

9.



9.1. 按「伺服器」，剔取「我的伺服器需要驗證」

Click "Servers" tab, then tick "My server requires authentication"

9.2. 按「套用」

Click "Apply"

如何透過 HKBN Broadband Mail 網上電郵服務接收電子郵件 How to Check E-mail via HKBN Broadband Mail Web-based E-mail Account?

1. 進入 <http://ecs.hkbnes.net>。
Go to <http://ecs.hkbnes.net>.
2. 於「網上電郵」選項中輸入「登入名稱」、「電郵域名」及密碼...。
Enter "Username", "Email domain" and "password" in webmail box.
3. 按「遞交」。
Click "Submit".

多謝您使用香港寬頻商業寬頻服務安裝指南! 現在您可享用我們為您提供的新一代互聯網服務。

Thank you for using this HKBN Broadband Service User Guide! You can now experience our HKBN Business Broadband Service.

如有任何查詢，歡迎致電商業客戶服務熱線或電郵至：

cscorp@hkbnes.net

Should you have any further queries, please feel free to call our Corporate Customer Services Hotline or email to:

cscorp@hkbnes.net.

[商業客戶服務熱線 Business Customer Services Hotline : 128 180](tel:128180)

[24 小時維修服務熱線 24-Hour Fault Reporting Hotline : 2131 2131](tel:21312131)

[香港寬頻商業寬頻網址 HKBN Business Broadband Website :](http://hkbnes.net)

<http://hkbnes.net>